

# Bloomfield Congregational Community Newsletter

## Celebrating Important Moments



**We served 1,000 meals  
for the Bloomfield  
Community for  
Thanksgiving!**



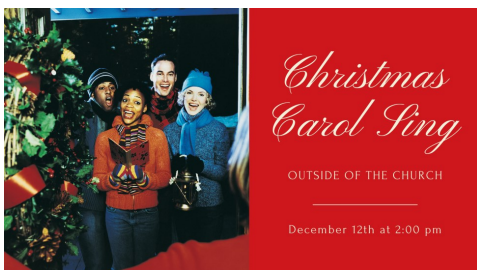
**We had a wonderful  
Interfaith Service!**



**We were able to do a  
successful Thanksgiving  
Boxes initiative even  
with Covid!**

## Looking Forward to what is Coming Soon!

**December 12<sup>th</sup>  
Carol Sing outside the  
church at 2:00 pm**



**December 13<sup>th</sup>  
Sacred Conversations**



**December 24<sup>th</sup>  
Online Christmas Eve  
Service and "Come to  
the Manger" Gathering  
at the church**



## Pastor's Message



Thank you. “For what?”, you might ask. For being the light. You are being the light. Yes, you. How is that? Let me count just 12 ways (for the Twelve Days of Christmas and all):

- 1) You raised over \$3,000 for the Thanksgiving Boxes
- 2) You provided over 1,000 Thanksgiving meals
- 3) You are persevering in difficult times
- 4) You are responding to the Christmas Toy challenge of *Doubling* the number of toys we are trying to deliver this year
- 5) You support our ongoing leadership in Interfaith efforts
- 6) You encourage each other and look out for each other and support each other
- 7) You encourage and look out for the staff and for me
- 8) You helped us give away over 1,000 masks – and counting
- 9) You are helping us to be clearly established as leaders in this community, shining a light like shines on the church building, a light that gives Hope
- 10) You did mailings of luminaries to our Community of Faith and then took more to spread the light to others who you knew would benefit from having one. You even came to the church to make over 100 for the church – inside and outside!
- 11) You are lighting your lights – connecting each of us in powerful ways. Some of those ways we will know. Some of those ways we will never know.
- 12) You are sharing and caring.

Now, Jesus didn't *specifically* mention each of these things when He said, “when you do these things for those in greatest need, you did it to me,” but He might as well have. Even in these most challenging times, you continue to rise to the occasion and beyond it.

It is amazing. *You are amazing.* Jesus said, “You are the light of the world.” You certainly are. And you are showing it.

Peace, Pastor Shawn





# Community Engagement

## Interfaith Service - an Amazing Experience

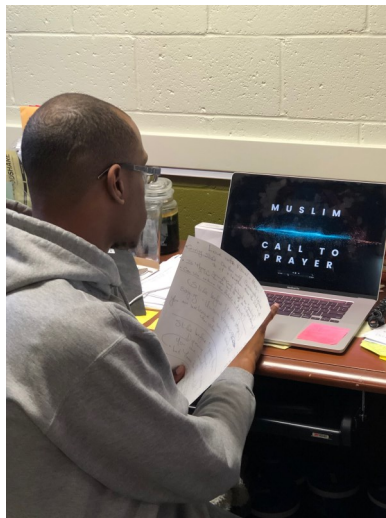


People were overwhelmed by how powerful this service was. We received rave reviews about the effort and quality that went into this service. People said it was the best interfaith service culturally and religiously that they have experienced. It was also the best attended Interfaith Service we have ever had! Thank you to everyone who had a part in putting this service together.



## People Making Things Happen!

Left: Ozma Gibbs, Pam Covington, Maurice Benson, and Trudi Barnard working on sending Luminaries to everyone. Middle: Malachi Mouning hard at work on the Interfaith Service. Right: The Community Kitchen Covid Crew plan how to keep making it all possible - and safe!





# Community Engagement

**An Amazing Week of Missions Impact: We provided over 1,000 Thanksgiving Meals. Thank you!**



Above: A great team worked many hours - and days - to make sure 67 families got their Thanksgiving Boxes. Thank you to everyone who donated and worked on this!



Above: The Community Kitchen team served over 250 warm meals and provided 73 turkeys and "all the fixings" for full Thanksgiving meals.



We also leveraged our resources and relationships to help Senior Services serve over 100 families. We had so much food going in and out we even had to use the library for organizing!! Oh, and on top of all of that, Right: And, we restarted the Backpack Program!

# Community Engagement

## And We're Not Done Yet!



As we pause to give thanks for our many blessings and celebrate the Advent season, we recognize that this year has brought more than its share of challenges. We are facing physical separation from ones we love because of the pandemic, and far too many of our brothers and sisters are struggling to meet their most basic needs because of all the financial hardship this year has brought about. As Christmas approaches, we are increasing our efforts to provide toys for children in foster care.

**Our goal this year is to *double* what we normally do.** That's funding a minimum of 100 presents this year. Here are some ways you can help:

- Make a donation! You can do so online here: [https://tithe.ly/give\\_new/www/#/tithely/give-one-time/1291319](https://tithe.ly/give_new/www/#/tithely/give-one-time/1291319) (Choose the Christmas Toy Fund in the drop down menu.)
  - Post about our fundraising efforts on your social media channels.
  - Reach out to Judi Bunker at judisb@aol.com or (860) 242-6192 if you can help order or organize gifts.
  - Pray for the success of our programs and those in need.
- Thank you for all you do to keep the light shining.



## Christmas Eve: "Come to the Manger"

Come to hear the Christmas story read live. Come to sing. Come to be together and hold a light and shine the light into the world. Come to see the Christ Candle lit on the Advent Wreath.

On Christmas Eve at 10 p.m., "Come to the Manger" where after a brief service outside, you will be invited to enter the sanctuary through the front doors, walk down our luminary filled aisle and approach the manger of the child who brings light into the world. We hope this will be a meaningful and safe spiritual experience for all who are able to attend. (Bring Your Mask and Your Open Heart)



# Looking Forward



## *Christmas Carol Sing*

OUTSIDE OF THE CHURCH

December 12th at 2:00 pm

## Christmas Carol Sing

We will have an outdoor Christmas Carol Sing on **December 12th at 2:00 pm!** We will be outside on the front lawn of the church. Come gather with friends and sing carols and get in the holiday spirit! (Don't forget your mask!)



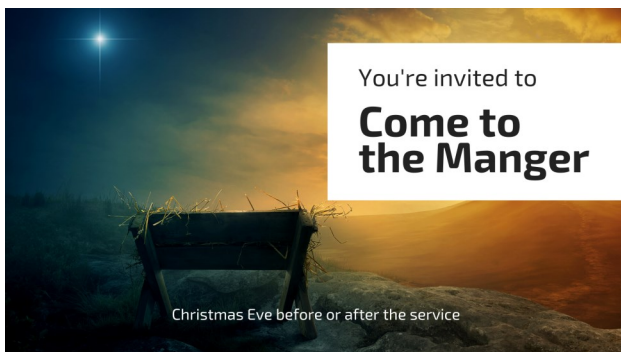
## Sacred Conversations

Sacred Conversations continue on Sunday, December 13<sup>th</sup> from 11:00 am to 1:00 pm on Zoom. Visit the Sacred Conversations link on the church website for information about Sacred Conversations and resources. The homework assignment for the next session will also be posted there.



## Christmas Eve Service: 8 p.m.

We will have our Christmas Eve Service online this year. We look forward to sharing a special service celebrating the Savior's birth together (even if it's a little different this year.)



## Christmas Eve at 10 p.m. "Come to the Manger"

Come and share a special, brief outdoor service. Then enter the sanctuary to see the manger and feel the power of the birth of Jesus through this experience!

# Looking Forward



**December 12<sup>th</sup>** Christmas Carol Sing 2 p.m.

**December 13<sup>th</sup>** Sacred Conversations 11 a.m.

**December 24<sup>th</sup>** Christmas Eve Service Online  
8 p.m.

Come to the Manger Gathering  
(at the church) 10 p.m.

**December 25<sup>th</sup>** Merry Christmas!

**December 27<sup>th</sup>** Online Carol Sing Service

**January 1<sup>st</sup>** Happy New Year!

## Birthdays

**Dec. 2<sup>nd</sup>** Libbie Merrow

**Dec. 3<sup>rd</sup>** Kelly Correa

**Dec. 4<sup>th</sup>** Larry Wild

**Dec. 6<sup>th</sup>** Dianne McKitty

**Dec. 9<sup>th</sup>** Paul Martel

**Dec. 10<sup>th</sup>** Sue Thompson

**Dec. 11<sup>th</sup>** Charles Walker

**Dec. 15<sup>th</sup>** Dee Hart

**Dec. 16<sup>th</sup>** Priscilla McCatty

**Dec. 25<sup>th</sup>** Michelle Alves

**Dec. 29<sup>th</sup>** Leslie Mills



**Jan. 2<sup>nd</sup>** Charlotte Babcock

**Jan. 4<sup>th</sup>** Allison Correa

**Jan. 6<sup>th</sup>** David Berg

**Jan. 8<sup>th</sup>** Trishell Stewart

**Jan. 10<sup>th</sup>** Bainie Wild

**Jan. 16<sup>th</sup>** Anne Weaver

**Jan. 18<sup>th</sup>** Virginia McDaniel

**Jan. 28<sup>th</sup>** Kathy Mathews

**Jan. 29<sup>th</sup>** Sharon Goetjen

**Jan. 29<sup>th</sup>** Karen Blanchard

**Jan. 29<sup>th</sup>** Maurise Benson

## December Anniversaries

December 30<sup>th</sup> - Clay and Dee Hart

# KEY CONTACT INFORMATION:

Bloomfield Congregational Church

10 Wintonbury Avenue

Bloomfield, CT 06002

Church Office: (860) 242-0776

Pastor Shawn Fisher: ext. 201

Director of Faith Formation Dorine DeCarli: ext. 203

Minister of Music Eustace Straker: ext. 202

Child Development Center: ext. 204

[www.firstchurchbloomfield.org](http://www.firstchurchbloomfield.org)

Facebook: <https://www.facebook.com/FirstChurchBloomfield.org/>

YouTube: [https://www.youtube.com/channel/](https://www.youtube.com/channel/UCxk_KR0fMB3wNWxBa86FVMQ)

[UCxk\\_KR0fMB3wNWxBa86FVMQ](https://www.youtube.com/channel/UCxk_KR0fMB3wNWxBa86FVMQ)

Instagram: <https://www.instagram.com/bloomfield.cc/>